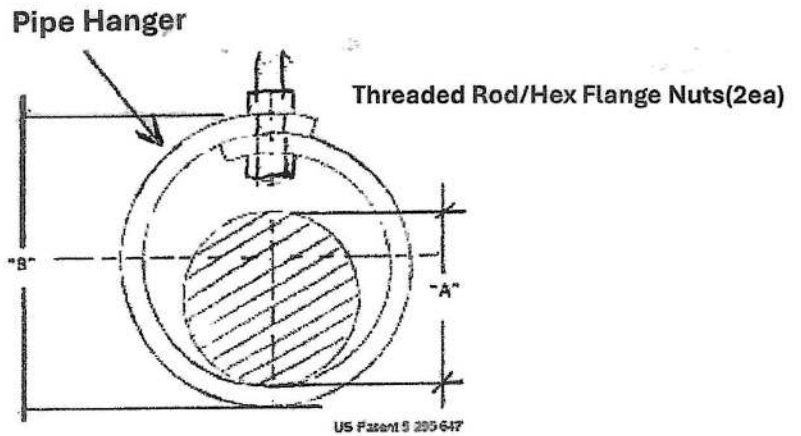
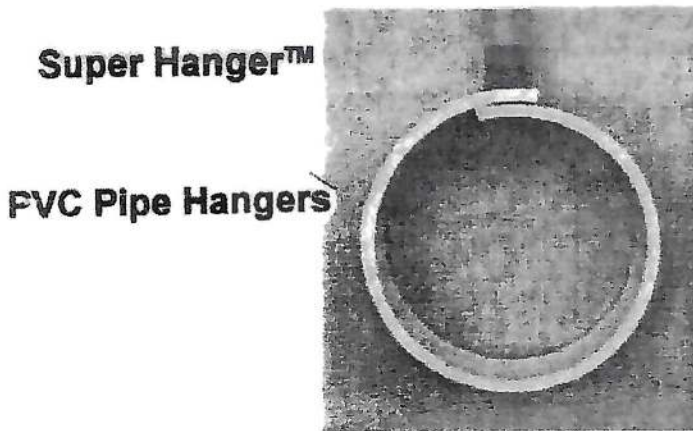




SuperHanger™ (patented PVC Pipe Hanger)

Part Number	Pipe Size 'A'	Hanger Size 'B'	Design Load	Hanger Rod Size
SH001	3/4"-1"	3"	100#	3/8"
SH015	1-1/4"-1-1/2"	4"	450#	3/8"
SH002	2"	4"	450#	3/8"
SH002A	2"	5"	650#	1/2"
SH003	3"	5"	450#	3/8"
SH003A	3"	6"	650#	1/2"
SH004	4"	6"	450#	3/8"
SH004A	4"	8"	650#	1/2"
SH006	6"	10"	650#	1/2"
SH008	8"	12"	650#	5/8"
SH010	10"	14"	650#	5/8"

Design Loads are based on minimum ultimate hanger failure safety factor 3:1



Lee Composites, Inc.
PO Box 130363
The Woodlands, TX 77393

www.leecomposites.com

boblee@leecomposites.com

(281) 376-6146 Office
(281) 782-2477 Mobile