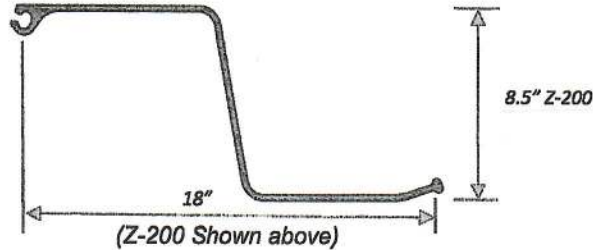


# SuperWall Fiberglass Sheetpile

## Specification Sheet

**Product: Z-Profile Interlocking Sheet Piling**



**Product Identification:**

<b>Trade Name</b>	
Z-200	SGP8500000-AxA

**Standard Specifications:**

Property	Units		Z-200
Moment of Inertia	in <sup>4</sup> /ft		62.80
Section Modulus	in <sup>3</sup> /ft		14.80
Ultimate Moment	ft-lb/ft		131,250
Moment with 3.5 SF	ft-lb/ft		37,500
Width	in		18.00
Depth	in		8.50
Weight (per unit)	lbs/ft		6.5
Web Thickness	in		0.26
Flange Thickness	in		0.26
Material		FRP Composite	
Colors		Charcoal,	

*Above results are typical values*

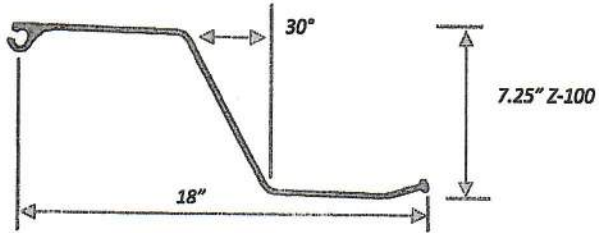
**LEE COMPOSITES, INC.**  
**P. O. Box 130363**  
**The Woodlands, Texas 77393-0363**  
**(O) 281-376-6146 (M) 281-782-2477**  
**Email: boblee@leecomposites.com**

# SuperWall

## Specification Sheet

### Fiberglass Sheetpile

Product: Z-Profile Interlocking Sheet Piling- 7.25"



#### Product Identification:

Trade Name	Exel Ref Number
Z-100	SGP7250000-AxA

#### Standard Specifications:

Property	Units	Z-200
Width	in	18.0
Depth	in	7.25
Cross Sectional Area	in <sup>2</sup>	6.5
Moment of Inertia	in <sup>4</sup> /ft	37.1
Section Modulus	in <sup>3</sup> /ft	10.25
Tensile Strength (LW)	ksi	71.5
Tensile Modulus (LW)	msi	4.4
Tensile Strength (CW)	ksi	3.9
Tensile Modulus (CW)	msi	1.9
Flexural Strength (LW)	ksi	58.8
Flexural Modulus (LW)	msi	3.8
Weight (per unit)	lbs/ft	4.7
Web Thickness	in	0.25
Web Angle ( $\Delta$ from perpendicular)	degrees	30°
Flange Thickness	in	0.25
Material		FRP Composite
Colors		Charcoal,

*The above results are typical values.*

**LEE COMPOSITES, INC.**

**P. O. Box 130363**

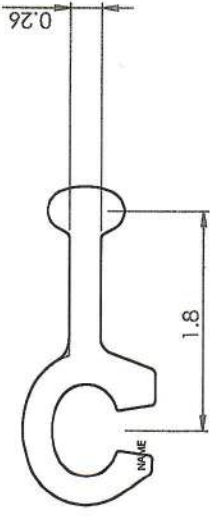
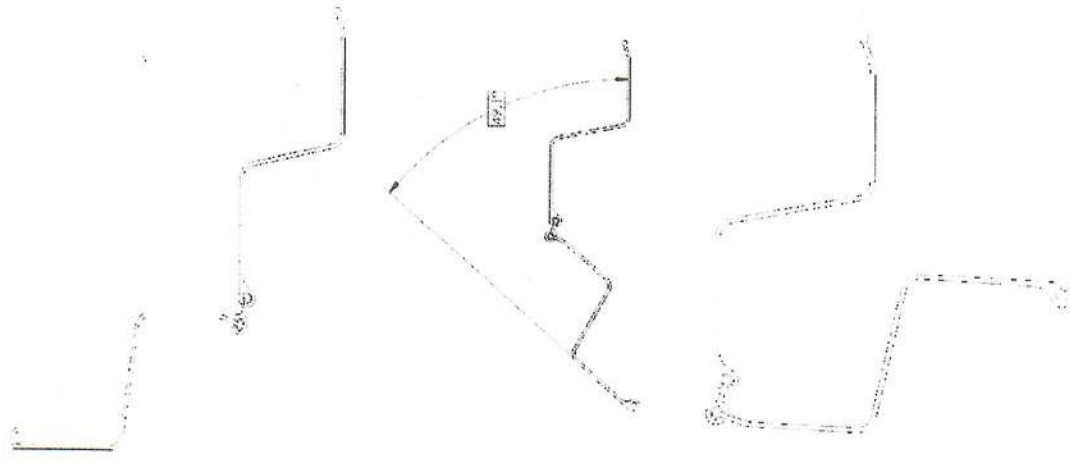
**The Woodlands, Texas 77393-0363**

**(O) 281-376-6146 (M) 282-782-2477**

**Email: [boblee@leecomposites.com](mailto:boblee@leecomposites.com)**

4 3 2 1

# SuperCorner Fiberglass Corner Connector



A B

TITLE: **Corner Profile**

SIZE DWG. NO. **B** REV

SCALE: 1:2 WEIGHT: SHEET 1 OF 1

**LEE COMPOSITES, INC.**  
 P. O. Box 130363  
 The Woodlands, Texas 77393-0363  
 (O) 281-376-6146 (M) 281-782-2477  
 Email: [bobleec@leecomposites.com](mailto:bobleec@leecomposites.com)

4 3 2 1