

**LEE COMPOSITES, INC.**  
**P. O. Box 130363**  
**The Woodlands, Texas 77393-0363**  
**(O) 281-376-6146 (M) 281-782-2477**  
**Email: [boblee@leecomposites.com](mailto:boblee@leecomposites.com)**

# HD-PE Sliding Fenders.

## **Characteristics**

- ▶ Low friction coefficient
- ▶ High abrasion resistance
- ▶ UV and ozone resistant
- ▶ Reduced conductivity optional
- ▶ 100% recyclable & non-rotting

## **Applications**

- ▶ Sliding boards
- ▶ Lock walls & entrances
- ▶ Quay wall protection
- ▶ Pile protection

**HD-PE SLIDING FENDERS**

**DIMENSIONS**

H [mm]	W [mm]	L [mm]	Weight [kg/m]
50	50	5,500	2.3
60	60	5,500	3.3
70	50	2,500	3.3
70	70	6,500	4.5
80	60	5,000	4.5
100	50	5,500	4.7
100	65	5,500	6.1
100	100	6,000	9.3
120	80	5,000	8.9
120	120	6,000	13.4
140	70	5,500	9.1
160	70	5,000	10.4
160	160	6,000	24.1
170	120	5,500	19.0
180	70	5,000	11.7
180	180	6,000	30.2
190	110	5,000	19.4
200	75	5,000	14.0
200	100	6,000	18.6
200	150	5,500	27.9
200	200	6,000	37.6
210	165	2,000	31.9
240	180	5,000	40.6
250	150	6,500	34.8
250	160	5,000	37.2
250	250	5,000	58.1
300	100	5,500	27.9
300	210	5,000	58.6
300	250	5,000	70.5
300	300	5,000	83.7
440	160	2,000	64.8

**RECOMMENDED FIXING DETAILS**

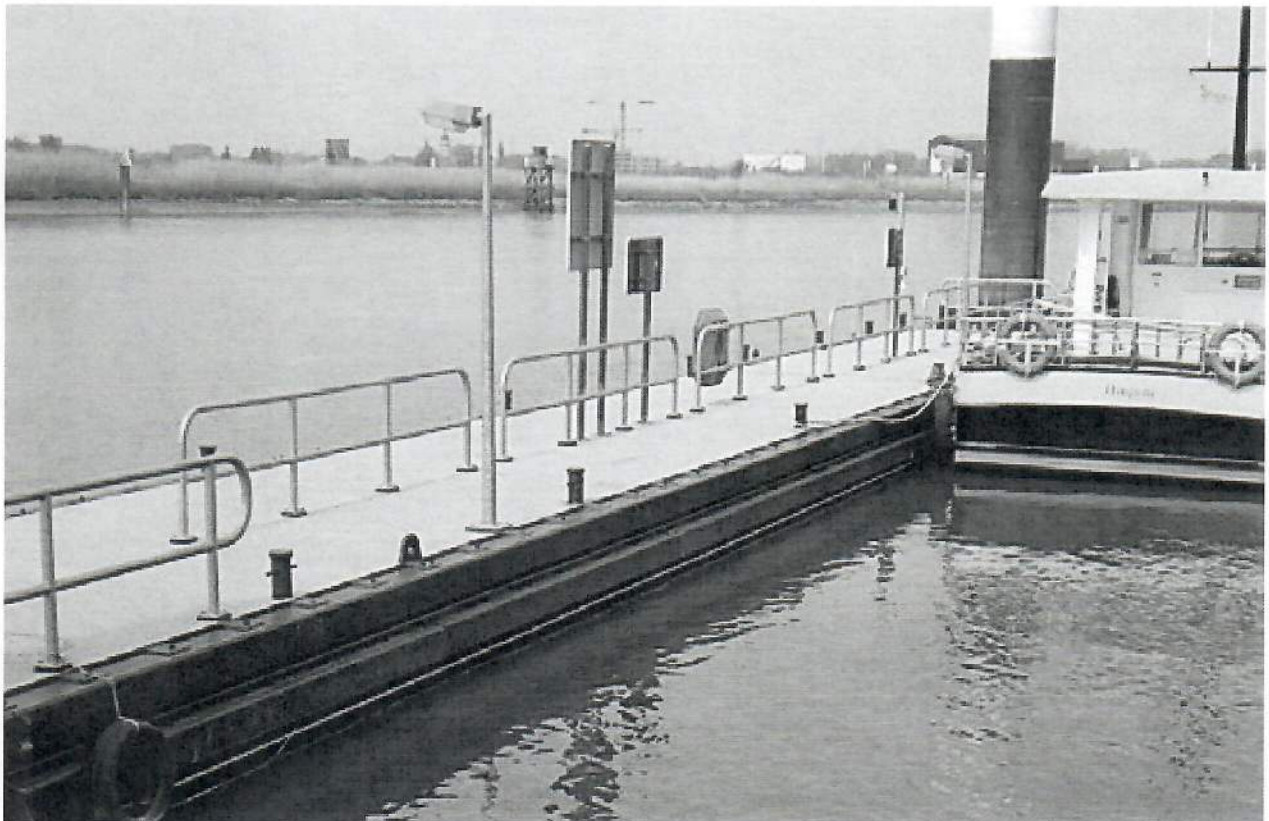
W/2 [mm]	B [mm]	Ø D [mm]	Ø E [mm]	F [mm]	ED [mm]	J [mm]	Flat Bar [mm]	Fixing
25	-	32	16	0	75-125	250-300	-	M12
30	-	32	16	0	75-125	250-300	-	M12
25	-	32	16	0	75-125	250-300	-	M12
35	-	32	16	0	75-125	250-300	-	M12
30	-	32	16	0	75-125	250-300	-	M12
25	-	32	16	0	75-125	250-300	-	M12
30	-	32	16	0	75-125	250-300	-	M12
50	32	32	16	0	75-125	250-300	50 x 6	M12
40	-	40	20	0	100-150	300-350	-	M16
60	40	40	20	0	100-150	300-350	65 x 10	M16
35	-	40	20	0-50	100-150	300-350	-	M16
35	-	40	20	0-70	100-150	300-350	-	M16
80	40	40	20	0-80	100-150	300-350	80 x 10	M16
60	40	40	20	0-80	100-150	300-350	65 x 10	M16
35	-	50	23	0-80	125-175	350-450	-	M20
90	46	50	23	0-80	125-175	350-450	80 x 10	M20
55	46	50	23	0-90	125-175	350-450	80 x 10	M20
35	46	50	23	0-100	125-175	350-450	-	M20
50	46	50	23	0-100	125-175	350-450	80 x 10	M20
75	46	50	23	0-100	125-175	350-450	80 x 10	M20
100	46	50	23	0-100	125-175	350-450	80 x 10	M20
80	46	50	23	0-130	150-200	450-550	80 x 10	M20
90	46	50	28	0-130	150-200	450-550	80 x 10	M24
75	46	65	28	0-130	150-200	450-550	80 x 10	M24
80	46	65	28	0-130	150-200	450-550	80 x 10	M24
125	56	65	28	0-130	150-200	450-550	100 x 10	M24
50	-	65	28	0-160	150-200	450-550	-	M24
105	56	70	36	0-160	175-225	500-600	100 x 12	M30
105	-	70	36	0-160	175-225	500-600	100 x 12	M30
105	72	70	36	0-160	175-225	500-600	100 x 12	M30
80	-	70	36	0-160	175-225	500-600	-	M30

**LEE COMPOSITES, INC.**  
**P. O. Box 130363**  
**The Woodlands, Texas 77393-0363**  
**(O) 281-376-6146 (M) 281-782-2477**  
**Email: boblee@leecomposites.com**

## PHYSICAL AND MECHANICAL PROPERTIES

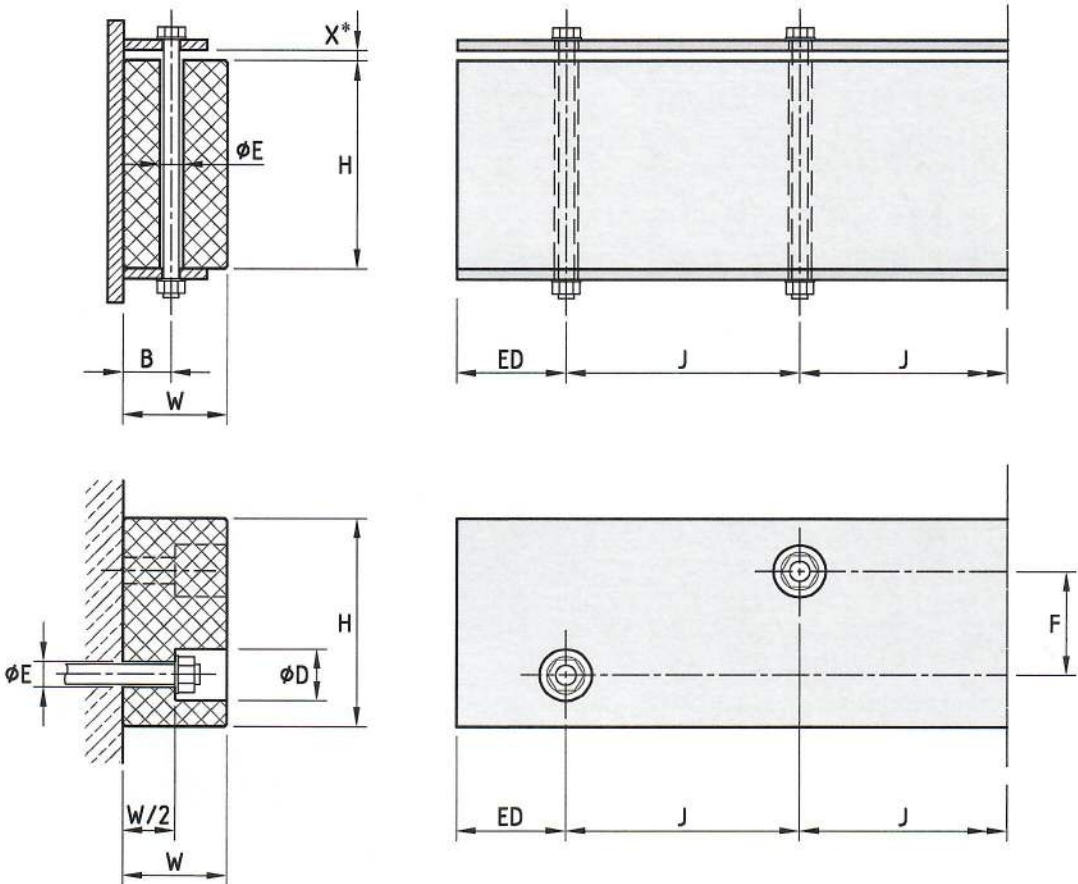
Properties	Standards	Results
Density [g/cm <sup>3</sup> ]	ISO 1183-1	0.90–0.95
Molecular Weight [g/mol]	Light diffusion method	~200,000
Dynamic Friction	–	0.20–0.25
Yield Strength [Mpa]	ISO 527	10–15
Shore Hardness [Shore D]	DIN 53505	48–52
Abrasion Index	ISO/DIS 15527 (Draft) FQ1000 - V = 100	~400
Operating Temperature [°C]	–	-20 to +80
Coefficient of Linear Expansion [K <sup>-1</sup> ]	DIN 53752	~ 2 x 10 <sup>-4</sup>

Owing their glass fibre reinforcement and material characteristics, HD-PE Sliding Fenders are able to bridge small gaps in the supporting structure | For applications with a curved substructures our factory is offering to produce precurved sliding fenders | For limitations and details, please contact your local SFT office

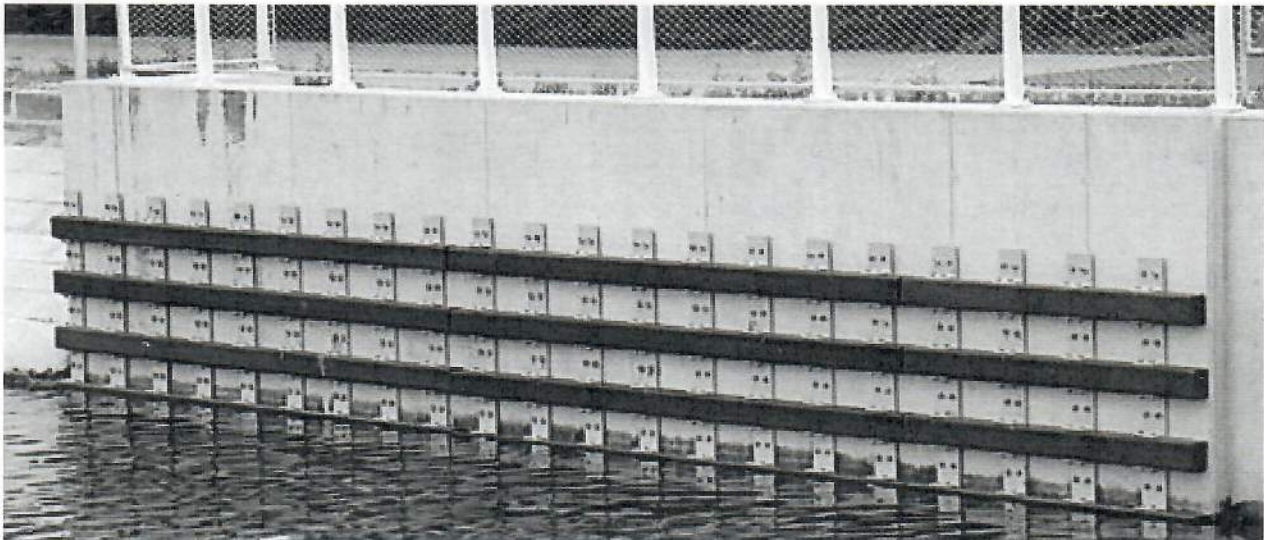


**LEE COMPOSITES, INC.**  
**P. O. Box 130363**  
**The Woodlands, Texas 77393-0363**  
**(O) 281-376-6146 (M) 281-782-2477**  
**Email: [boblee@leecomposites.com](mailto:boblee@leecomposites.com)**

### HD-PE SLIDING FENDER DRAWING



\* Allowance for cross-sectional tolerances of  $\pm 4\%$  | Planing optional to reduce plus tolerances



**LEE COMPOSITES, INC.**  
**P. O. Box 130363**  
**The Woodlands, Texas 77393-0363**  
**(O) 281-376-6146 (M) 282-782-2477**  
**Email: [boblee@leecomposites.com](mailto:boblee@leecomposites.com)**